

infinity

INFINITY SERVER

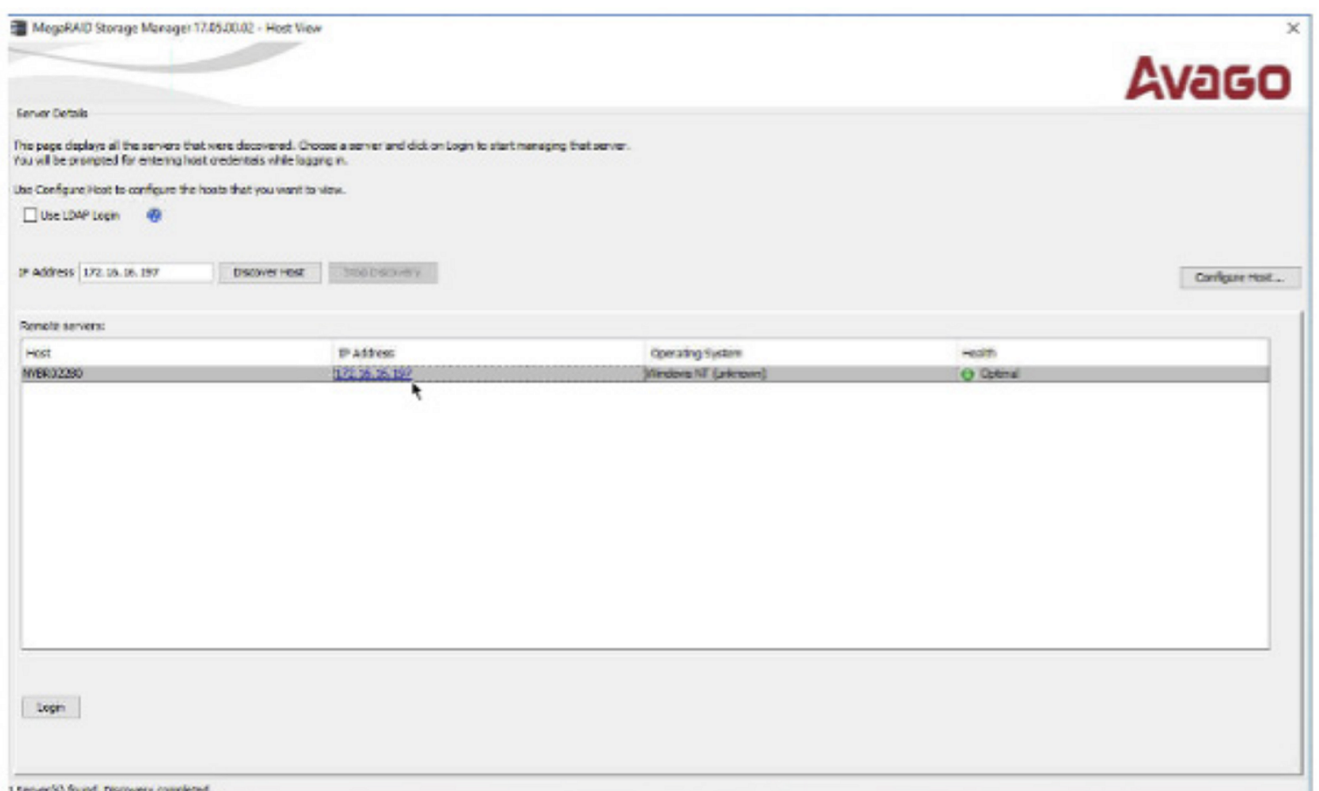
INFINITY MEGARAID SOFTWARE SETUP

MegaRAID Setup

RAID 5

To begin setting up a RAID in MegaRAID Storage Manager, you will first need to open the software:

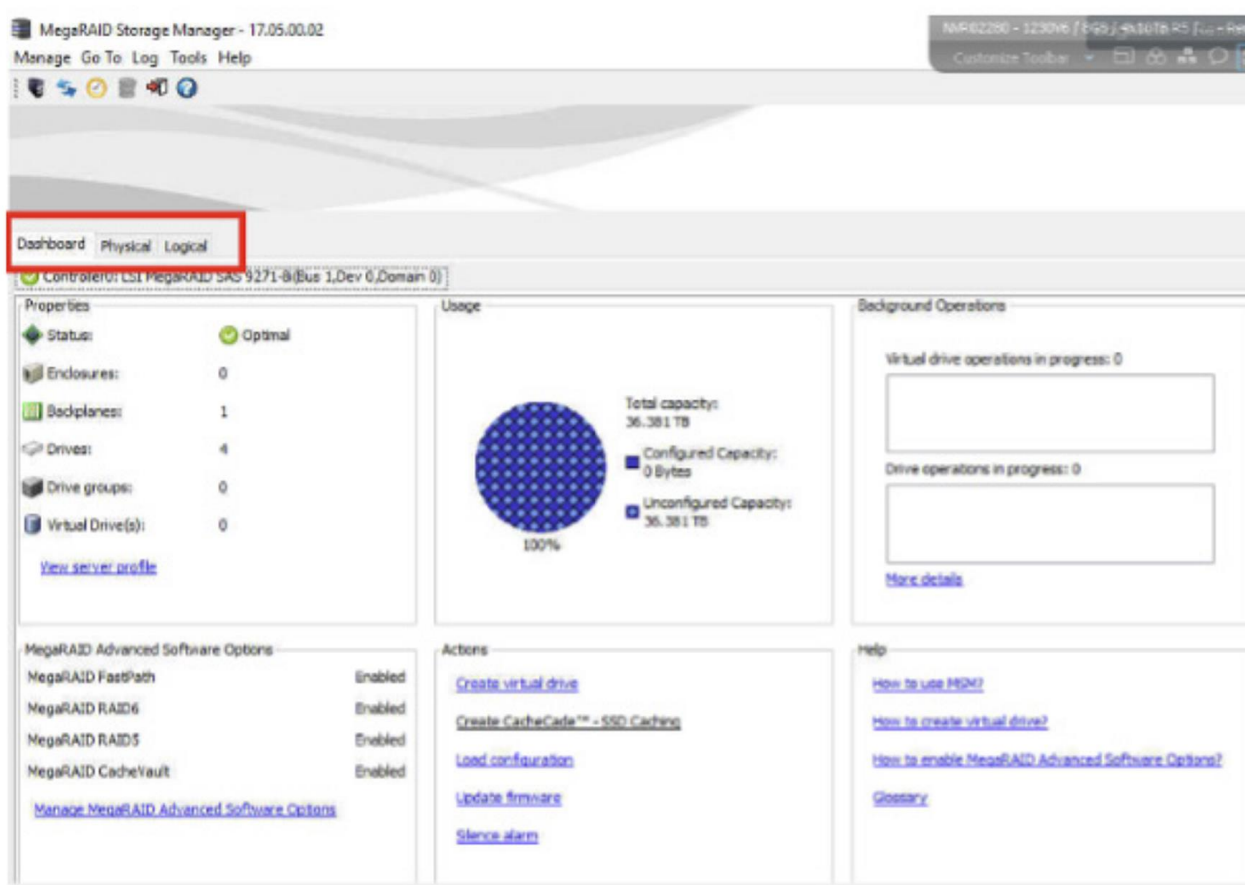
Double click the icon on the desktop, when opening for the first time you will be greeted with the following screen:



It may take some time to load and find your local NVR, you can also change the IP Address to 127.0.0.1, which will speed up this process.

Once it has loaded, double click the IP Address highlighted blue, and enter the Windows Username and Password. MegaRAID will fully load after correct input.

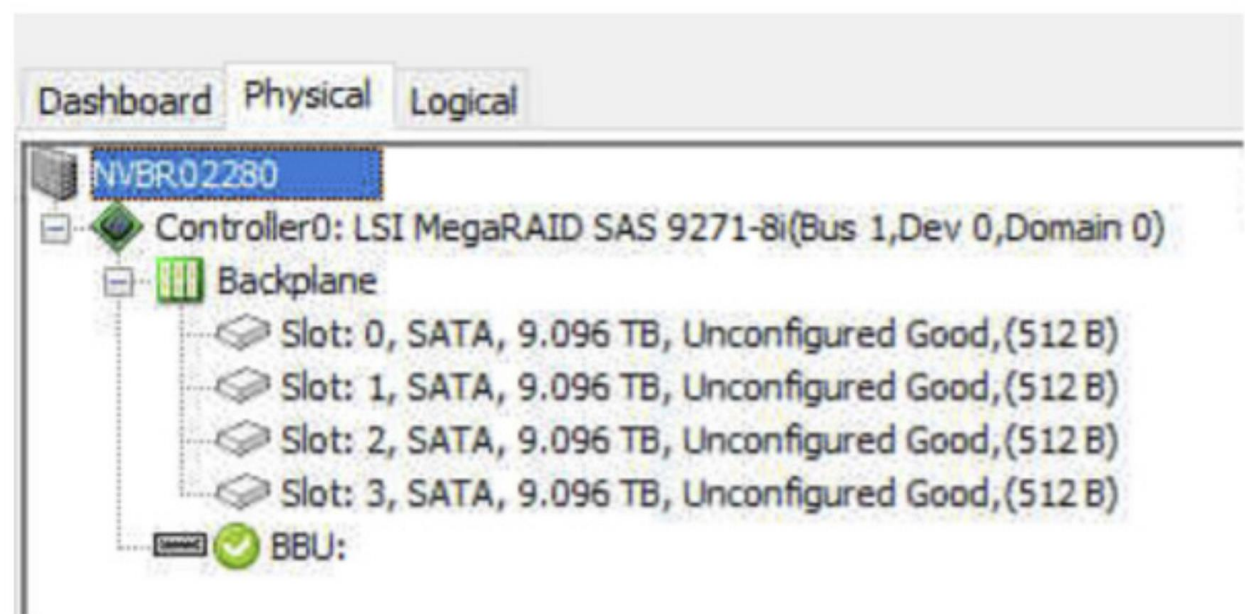
When loaded, you will see its main menu:



There are a lot of options, but we will only be using one, so don't worry about all of the others.

Firstly, confirm your drives are in the correct configuration before proceeding. You can do this by heading over to the Physical tab in the top left outlined by the red rectangle.

When in the Physical tab, your drives should look like this:



Once confirmed, head back to Dashboard and select “Create Virtual Drive”, depicted by the red rectangle in the below picture.

DashboardPhysicalLogical

Controller0: LSI MegaRAID SAS 9271-8i(Bus 1,Dev 0,Domain 0)

Properties

Status:

Optimal

Endlosures:

0

Backplanes:

1

Drives:

4

Drive groups:

0

Virtual Drive(s):

0

[View server profile](#)

Usage

100%

Total capacity:

36.381 TB

Configured Capacity:

0 Bytes

Unconfigured Capacity:

36.381 TB

MegaRAID Advanced Software Options

MegaRAID FastPath

Enabled

MegaRAID RAID6

Enabled

MegaRAID RAID5

Enabled

MegaRAID CacheVault

Enabled

[Manage MegaRAID Advanced Software Options](#)

Actions

Create virtual drive

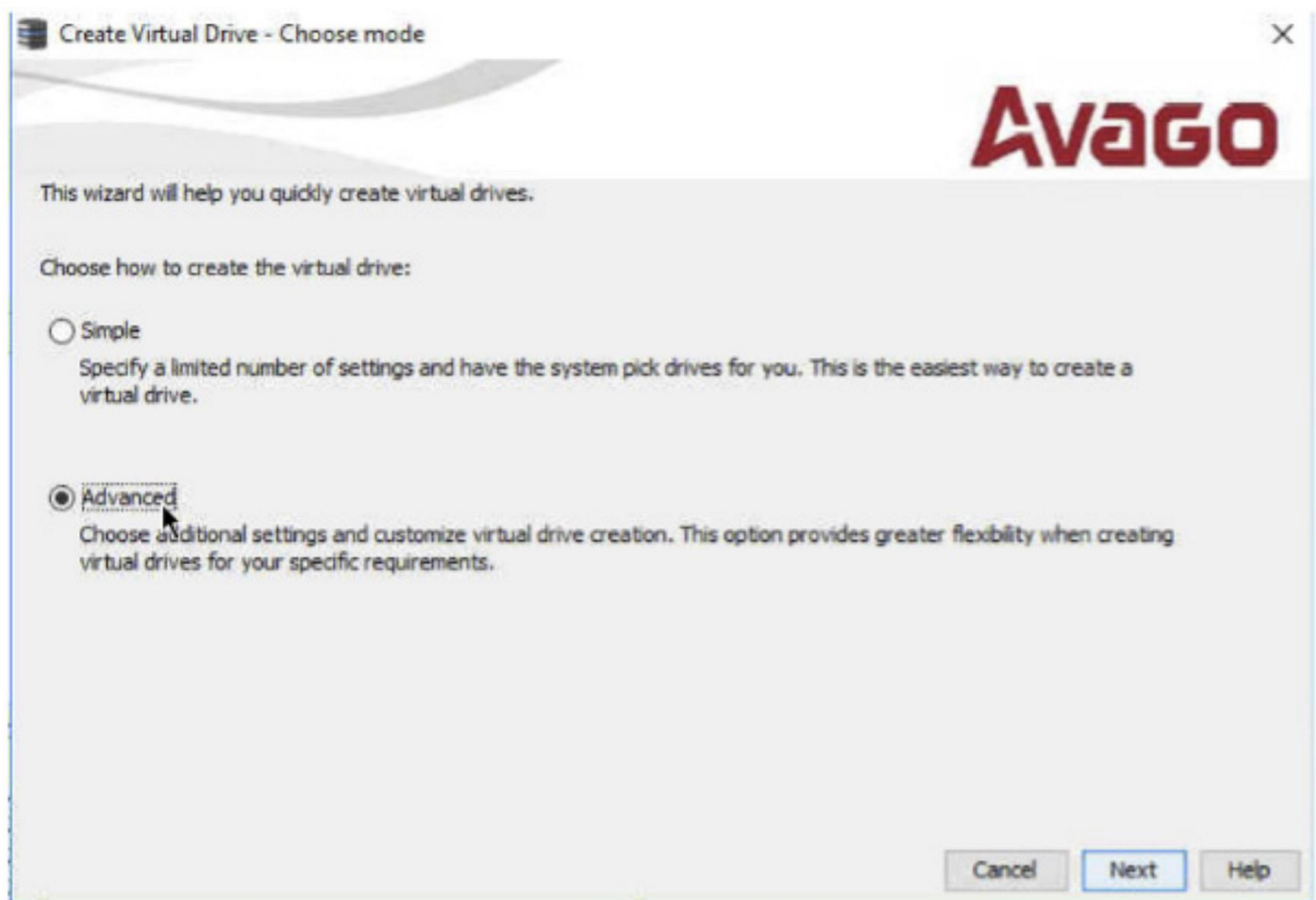
Create CacheCade™ - SSD Caching

[Load configuration](#)

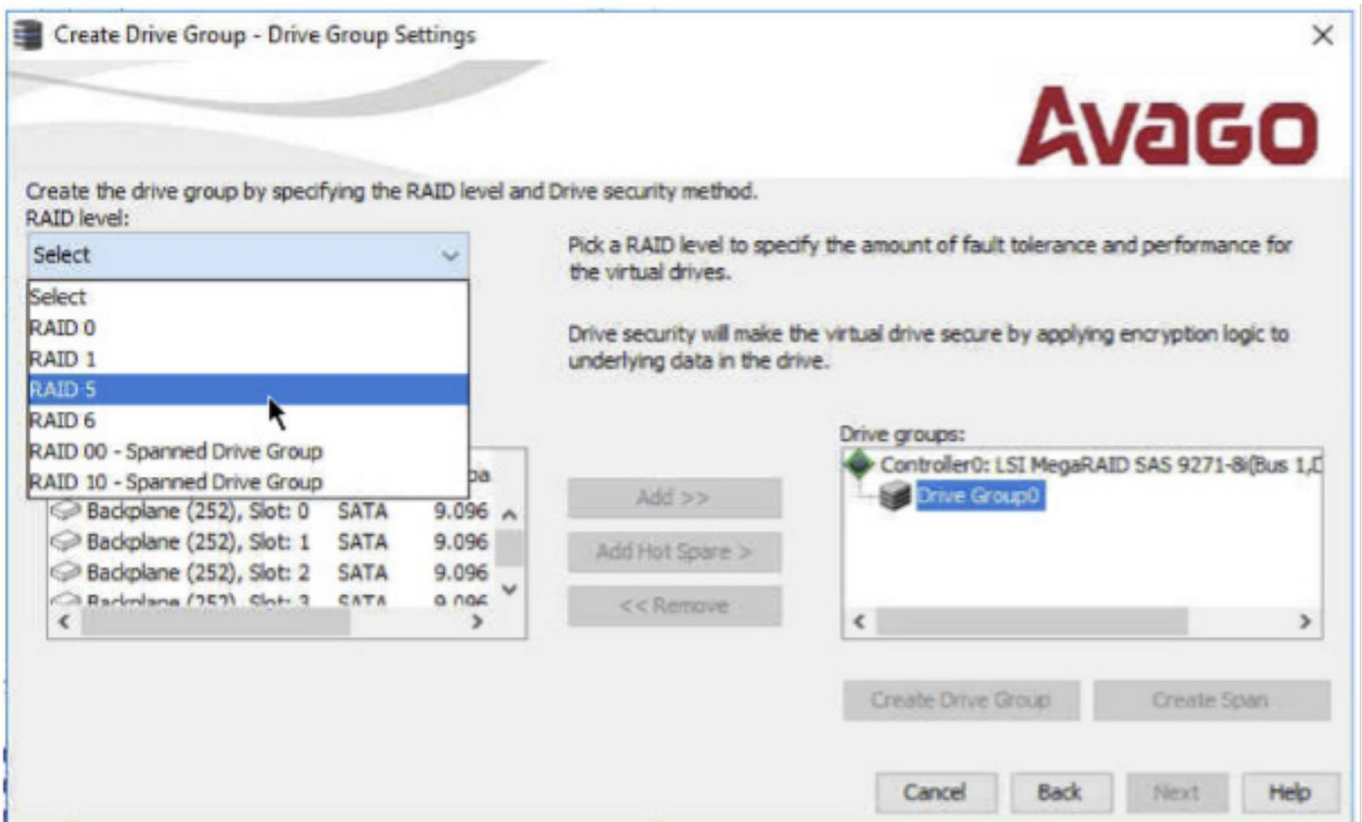
[Update firmware](#)

[Silence alarm](#)

You will now be greeted with the menu. Select the “Advanced” radio button and click next.



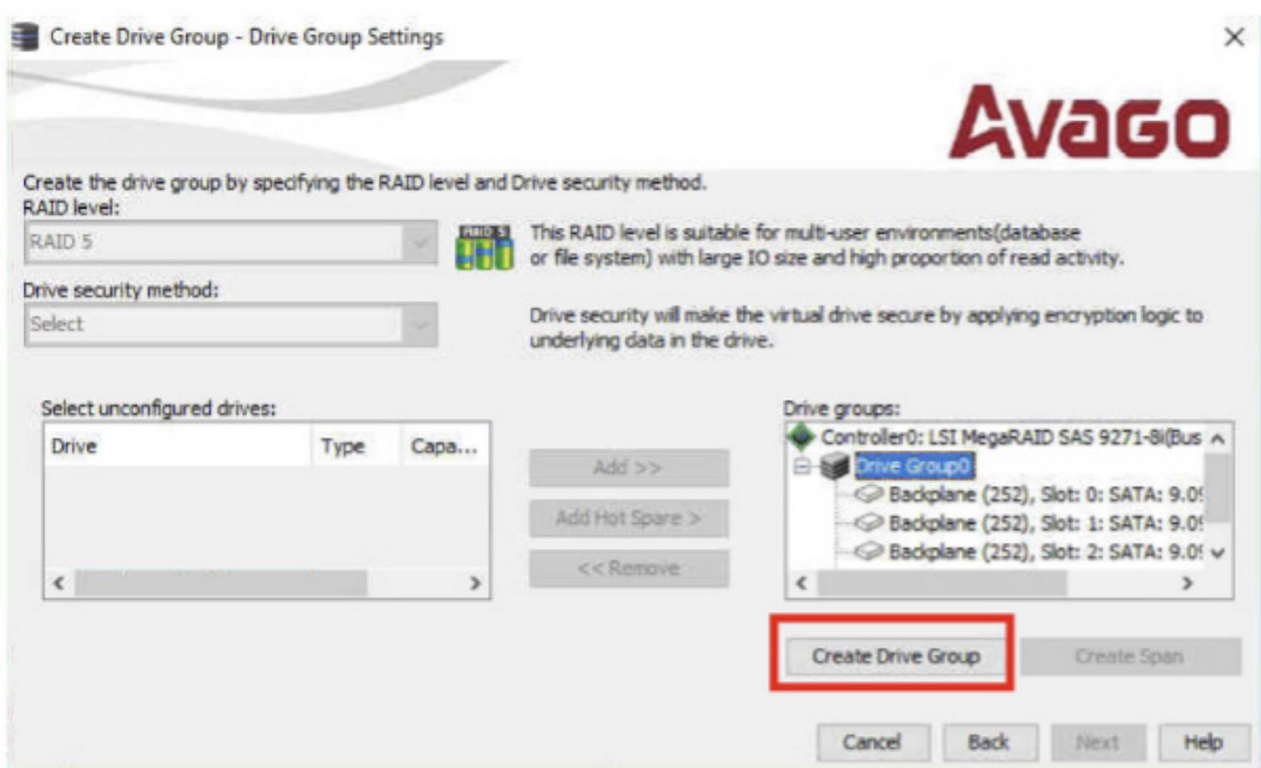
You should now see the following interface, select RAID Level 5 firstly:



Once you have selected RAID 5, **highlight and select all drives** in the left-hand box and click Add to add them to the controller on the right




When they have been added, click "Create Drive Group"



Create Drive Group - Drive Group Settings

Create the drive group by specifying the RAID level and Drive security method.

RAID level: **RAID 5**  This RAID level is suitable for multi-user environments(database or file system) with large IO size and high proportion of read activity.

Drive security method: **Select** Drive security will make the virtual drive secure by applying encryption logic to underlying data in the drive.

Select unconfigured drives:

Drive	Type	Capa...
-------	------	---------

Add >> **Add Hot Spare >** **<< Remove**

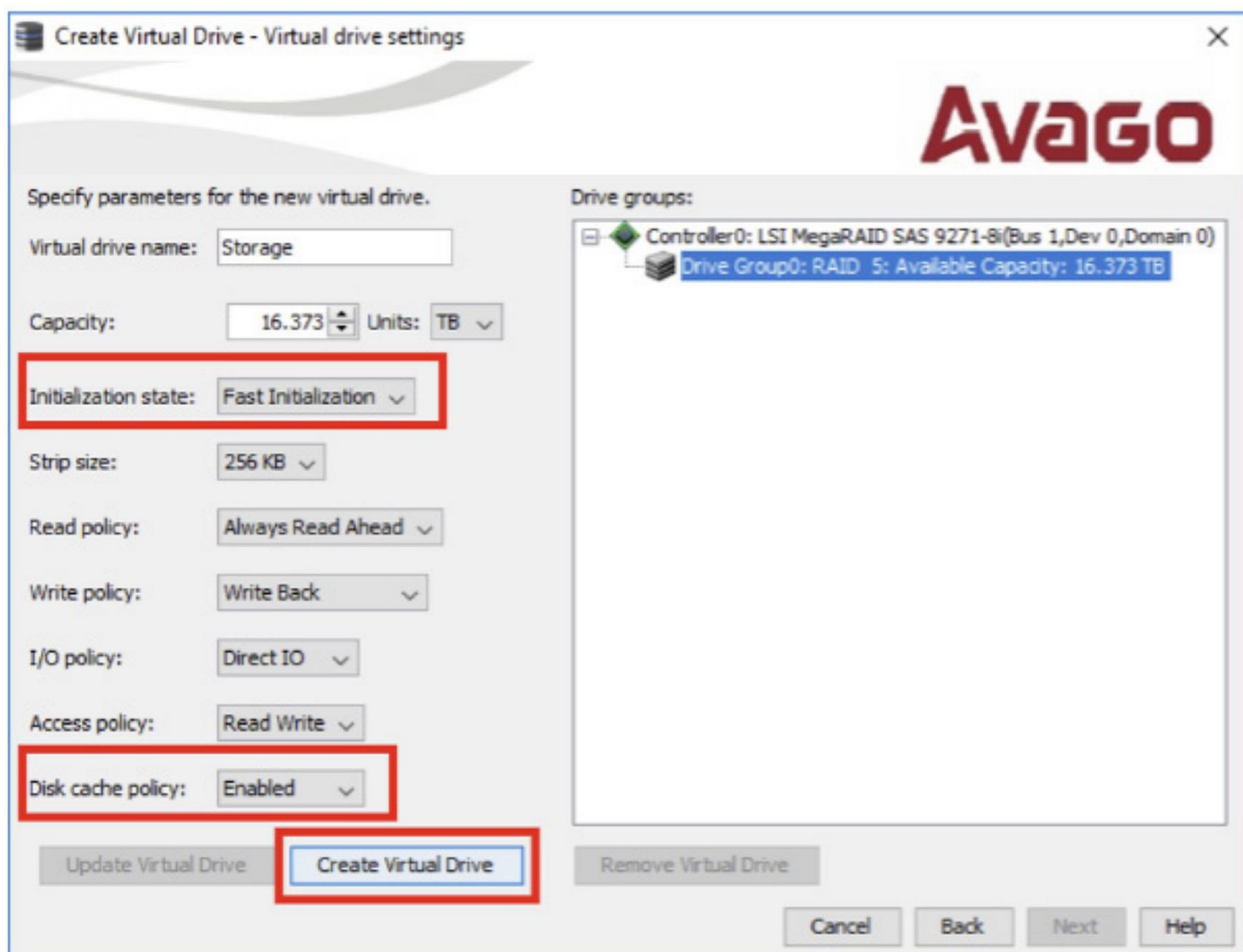
Drive groups:

- Controller0: LSI MegaRAID SAS 9271-8i(Bus ^
 - Drive Group0**
 - Backplane (252), Slot: 0: SATA: 9.0i
 - Backplane (252), Slot: 1: SATA: 9.0i
 - Backplane (252), Slot: 2: SATA: 9.0i

Create Drive Group **Create Span**

Cancel **Back** **Next** **Help**

After making the drive group, click next.



Create Virtual Drive - Virtual drive settings

Specify parameters for the new virtual drive.

Virtual drive name: **Storage**

Capacity: **16.373** Units: **TB**

Initialization state: Fast Initialization

Strip size: **256 KB**

Read policy: **Always Read Ahead**

Write policy: **Write Back**

I/O policy: **Direct IO**

Access policy: **Read Write**

Disk cache policy: Enabled

Create Virtual Drive **Remove Virtual Drive**

Update Virtual Drive **Cancel** **Back** **Next** **Help**

Drive groups:

- Controller0: LSI MegaRAID SAS 9271-8i(Bus 1,Dev 0,Domain 0)
 - Drive Group0: RAID 5: Available Capacity: 16.373 TB**

Here are the options to select here:

- Capacity: Leave default
- Initialisation state: Fast initialization
- Read Policy: Leave default
- Write Policy: Leave default
- I/O Policy: Leave Default
- Access Policy: Leave Default
- Disk cache policy: Select Enabled

Once the options are selected, click "Create Virtual Drive" > Next >

Finish Congratulations, you have created a RAID 5 Array!

[Disclaimer](#)

These are specific instructions only for a RAID 5 array. Any other RAID type will have a specific setup.